

Enhancing **Care Communities**

within Sub-Regions

Sub-Region Update

December, 2017



Ontario

Local Health Integration
Network

Réseau local d'intégration
des services de santé

How will people experience care in Sub-Regions?

- The patient will experience a **community of care – a network of health and social services providers working together to integrate care for the patient.**
- Care will surround the patient and can be accessed wherever they are, even if they are geographically located in another Sub-Region.
- Building care communities around patients will ensure access to health care and community services, engage relevant providers, and integrate care.

(MOHLTC, August 1, 2017)

The Aim

“Through sub-regional (community level) planning, identify how providers will collaborate to address health gaps, and improve patient experience and outcomes.”

(MOHLTC Mandate Letter, May 2017)



The Patients' Voice is Paramount ...



Meet Rebecca:

- “We are a young family who was suddenly thrown into the health care system.
- The system has many caring people who provide excellent care. But it also has gaps between transitions of care, and when you or your loved one is in a life-threatening situation, you need to know who is in charge to feel comfortable – where your care plan is and who is on first.”

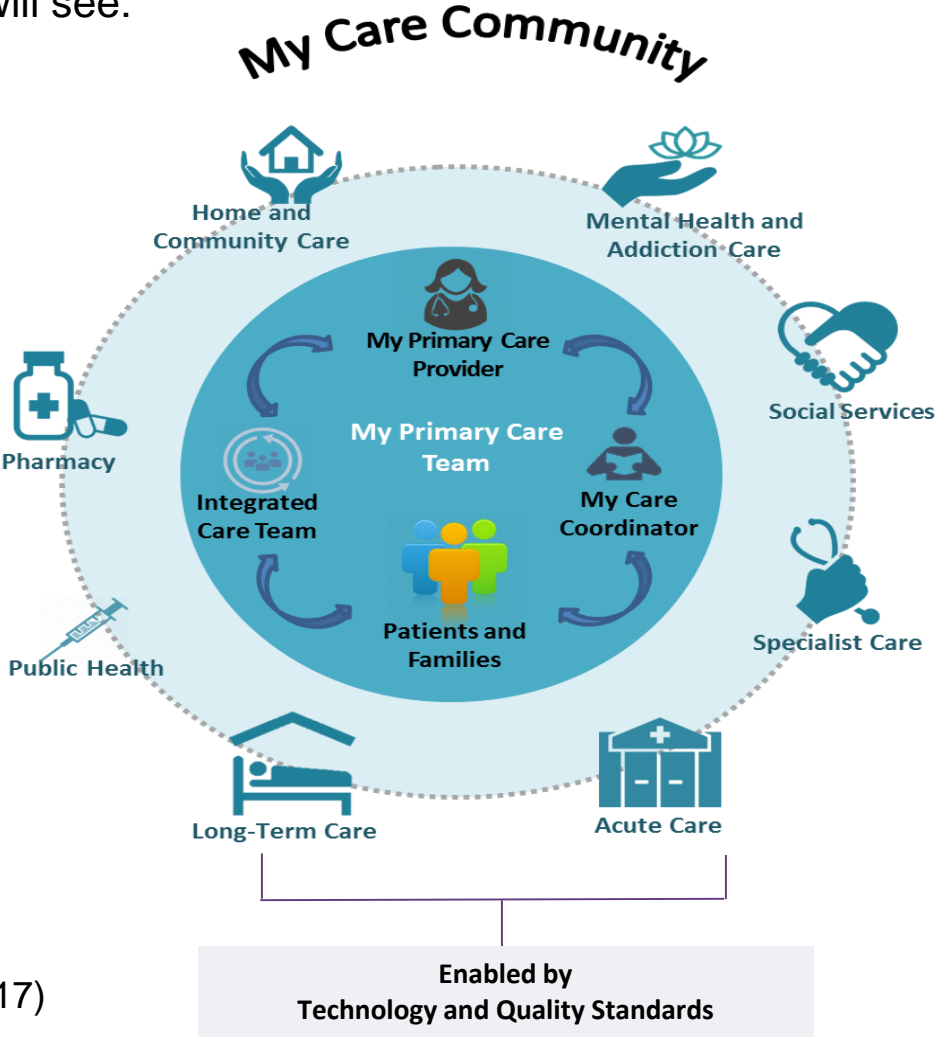


Meet Susan

- In the words of Susan Koppisch, member of our newly formed Patient and Family Advisory Committee and active volunteer at the West Parry Sound Health Centre, “I have a strong interest in patient care. I do it because I love it. I love putting a smile on a patient’s face.”

Ontario's Vision for Health System Transformation

Patients First envisions an **integrated** health care system that delivers world-class **patient care** and ensures **equitable access** to health services across the province. As part of this vision, transformation will see:

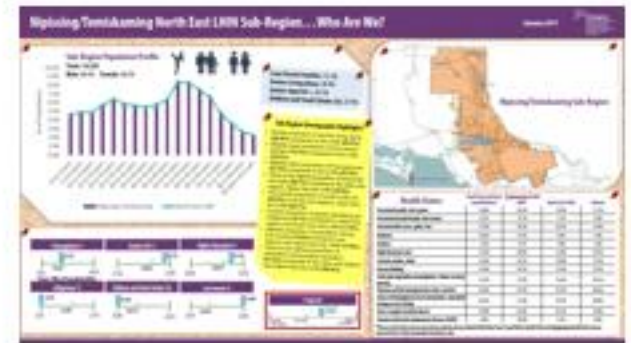


Sub-Regions Moving to a Local Level

565,000 Northerners

Sub-Region Approach

Local Planning



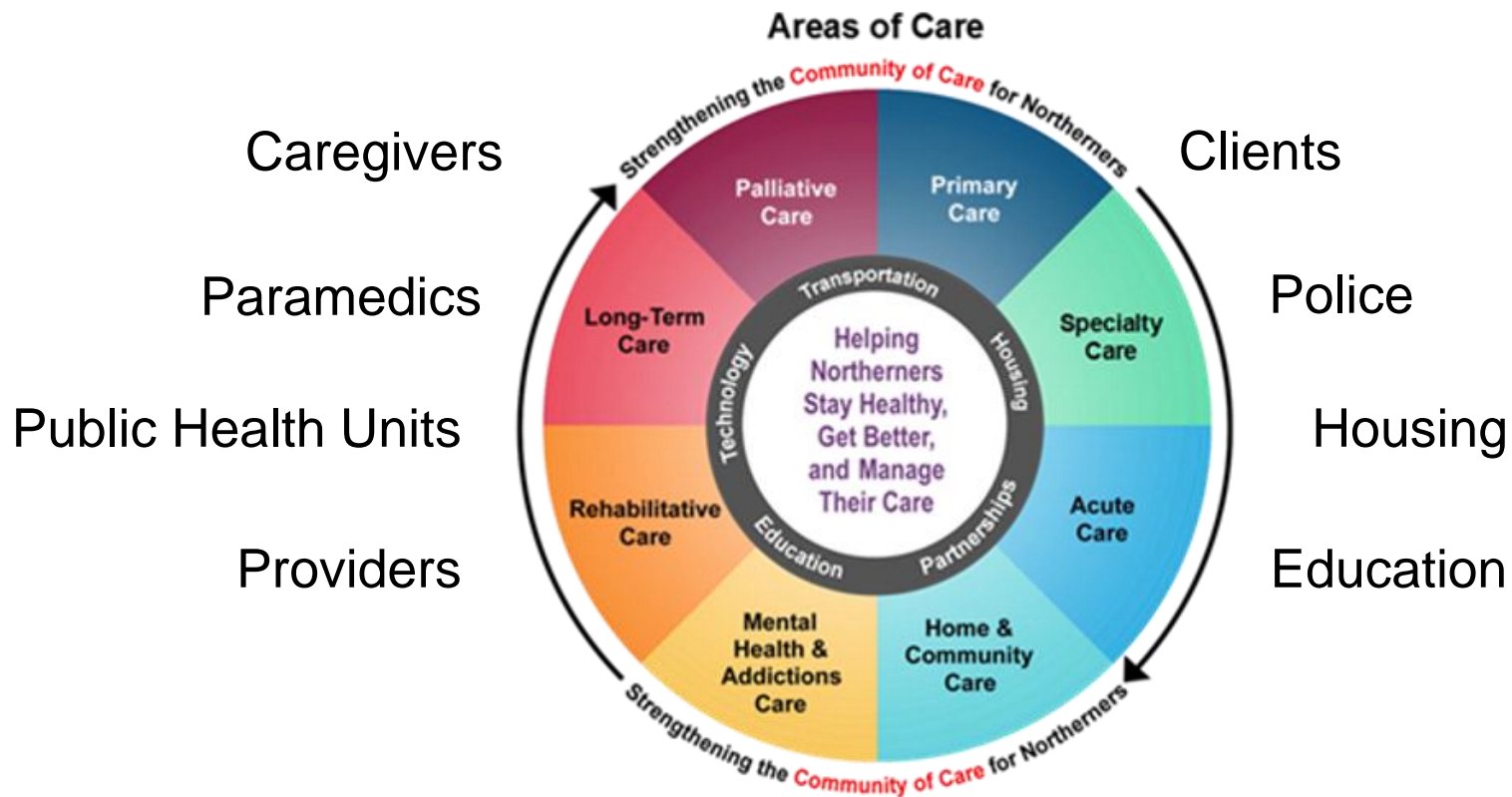
- Strengthening local partnerships
- Understanding local needs
- Quality improvement
- Service alignment and integration

Foundation: Integrated Health Services Plan



Approved by NE LHIN Board of Directors, 2016

Enhancing “Areas of Care” - to Build Care Communities at a local level



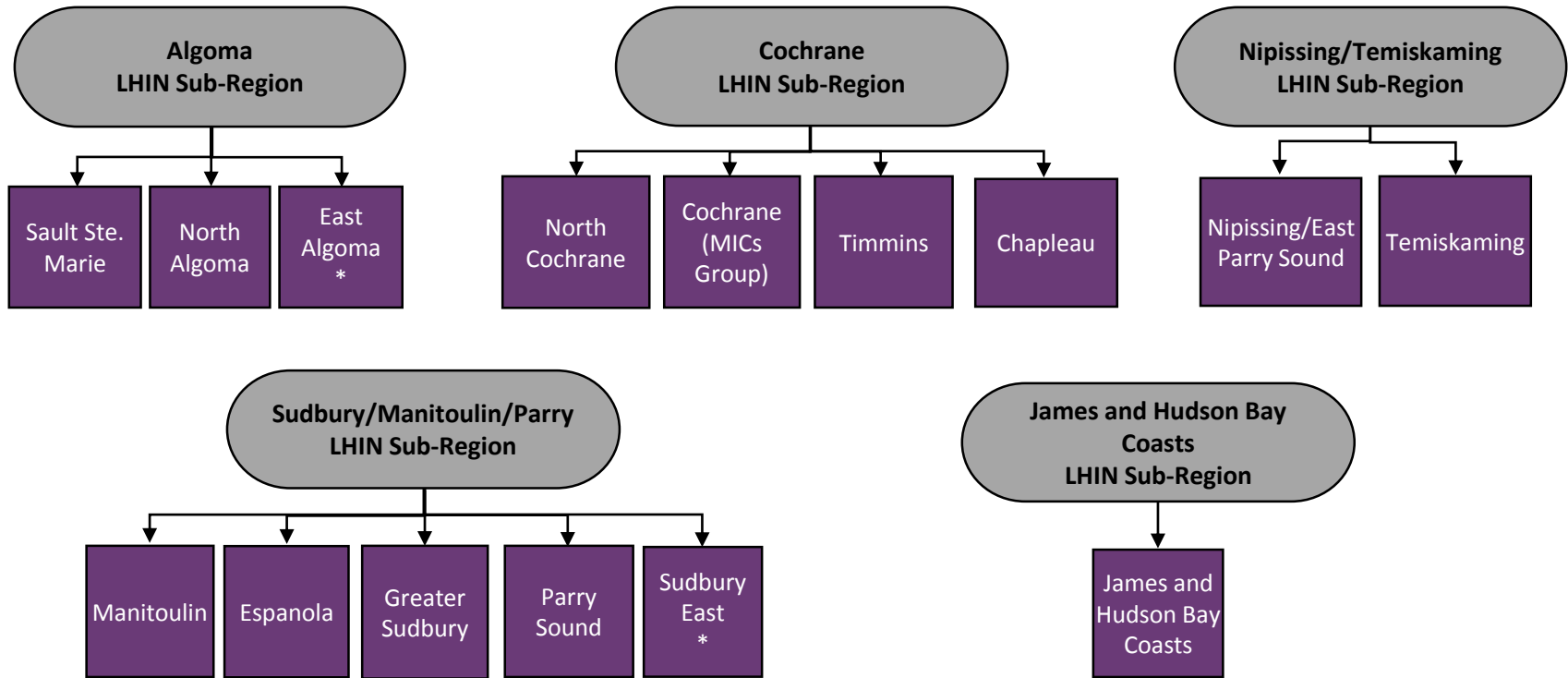
Approach

What are Sub-Region and Outreach Officers doing?	How are we doing it?
System <u>Planning</u>	<ul style="list-style-type: none">• Analyzing current state• Desired end state and Action Planning• Implementation• Monitoring, evaluating, adjusting
System <u>Funding</u>	<ul style="list-style-type: none">• Identifying opportunities• Coaching local leaders in Business Case development• Maximizing new funding
System <u>Integration</u>	<ul style="list-style-type: none">• Coordinating services and investments• Fostering partnerships• Co-ordinating providers and organizations

High Level Milestones

3 Months	6 Months	Within 1 Year, By April 2018
<ul style="list-style-type: none">• Use local tables to focus on desired outcomes: improve performance related to MLAA, Mandate Letter, and objectives within Patients First (in 70% of the areas, existing tables are being used).	<ul style="list-style-type: none">• Develop collaboratives and outcome-based action plans in other areas (Timmins, Sudbury, Sault Ste. Marie).• Leverage expertise of related regional leaders/initiatives (Rehabilitation, Palliative, H&CC, Primary Care, MHA etc.).	<ul style="list-style-type: none">• Use outcomes and Action Plans to inform development of next IHSP (August 2019)• Consider integrating related tables such as Health Links, ALC Flow tables to align work efforts.• Evaluate, adjust, plan for future years.

Where are the local collaborative tables?



Building Collaboratives

Bringing People Together



Home and Community Care leaders working with partners (Family Health Team and Hospital leaders) at a local collaborative.

Care Communities



Putting the *Local* back into the
Local Health Integration Network

Thank You
Merci
Miigwetch